

# ARTEMIS

June 2019

*Cindy Naunton's*  
**THE FORGOTTEN PRINCE:  
WILLIAM OF GLOUCESTER**

*From the*  
**British Royals Series**

The energies of the royal family charts are intertwined and expansive, and strange are the links and twists of fate. Cindy Naunton turns her astrological attention to the intriguing and tragic life of Prince William of Gloucester.

*The Prince 1965, photo from [www.dailytelegraph.com.au](http://www.dailytelegraph.com.au)*

---

# THE FORGOTTEN PRINCE



Prince William of Gloucester (front centre) visiting Tywyn. Photo from Peoplepill.com

**Born in 1941 during the dark days of World War 2, William of Gloucester has become the 'Forgotten Prince'. Yet his story has an interesting place in British Royal History.**

His father, Prince Henry, Duke of Gloucester is brother to the reigning King George VI. At the time of William's birth Britain was deeply plunged into a war with Germany. So the arrival of a Prince was not front page news. Only eleven days before his birth Japan had launched its attack on Pearl Harbour, Hawaii. His parents were no doubt

delighted at his birth as his mother the Duchess of Gloucester was close to 41 years of age and had already suffered two miscarriages.

William of Gloucester was at the time of his birth, a close contender for the throne of England, being fourth in line. He is first cousin to Queen Elizabeth. In 1946 his father,

the Duke of Gloucester, became the Governor General of Australia. When he married Lady Alice Montagu Douglas Scott in 1935 Princess Elizabeth was one of the bridesmaids. And when Princess Elizabeth married Prince Phillip in November 1947 William was one of the pageboys. When Prince Charles was born in 1948 William of

William of Gloucester was at the time of his birth, a close contender for the throne of England, being fourth in line.

Gloucester was pushed farther down the line of succession.

Prince Charles had a great admiration for his cousin and when Prince Charles' first son was born in June 1982, he was named William in honour of William of Gloucester.

By chance I viewed the programme *The Other Prince William* and my love of astrology kicked in.

I remembered my very British grandmother having books on the royals and of me being relegated to a quiet corner when we visited. In those books was a striking photograph of Prince William of Gloucester as a child. What if any, were the links between the 'Prince Williams' other than their common name?

Upon examination of their charts the obvious link is contained in the reciprocity of the positions of the Sun, Moon and Ascendant. Both Prince Williams are born in the hours following a new Moon and here the linkages become intriguing. William of Gloucester has his Sun at 26.22 Sagittarius and Moon at 29.52 Sagittarius and Ascendant at 3.18 of Cancer.

By comparison, William of Cambridge has his Sun at 0.06 Cancer and his Moon at 4.57 Cancer and his Ascendant at 27.30 Sagittarius. So the Ascendant of one is tightly conjunct the Sun and Moon of the other, in both cases. Amazing! Looking further afield the MC of William of Gloucester at 28.15 Aquarius is the antiscia of William of Cambridge's at 2.28 Scorpio. Using whole sign houses the MC of William of Gloucester falls in House 8. William of Cambridge has his MC in House 12. Neither are happy houses.

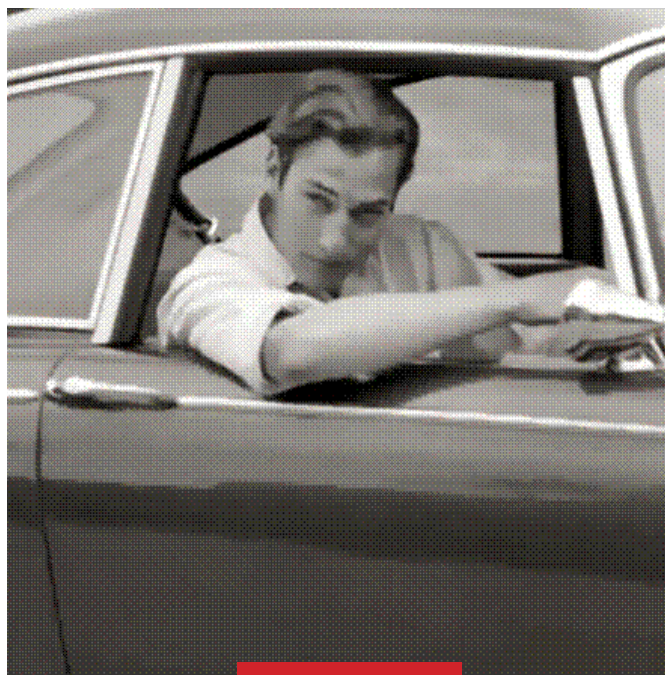
Delving a little further for similarities we find William of Gloucester has his Sun, Moon and Ascendant in the terms of Mars. With his Mars at 19.16 of Aries in



Prince William of Gloucester was an avid pilot.  
Photo from [www.johnhalley.uk](http://www.johnhalley.uk)

**His MC  
in the air sign  
Aquarius in House 8  
(whole sign Houses)  
reflects his  
tragic death  
in an air crash.**





**William of Gloucester has his Sun, Moon and Ascendant in the terms of Mars. With his Mars at 19.16 of Aries in rulership and House 10 (ten signs from his Asc) this is a strong Mars and the mark of a restless, rebellious nature, a sportsman and a risk-taker with a love of life.**

Left: Prince William of Gloucester was first cousin to the Queen.  
Right: Prince William of Gloucester  
Photos from [www.johnhalley.uk](http://www.johnhalley.uk)

rulership and House 10 (ten signs from his Asc) this is a strong Mars and the mark of a restless, rebellious nature, a sportsman and a risk-taker with a love of life. With a Cancer ascendant his primary drive is for emotional security found through House 6, the house of service and living 'an ordinary life.' His MC in the air sign Aquarius in House 8 (whole sign Houses) reflects his tragic death in an air crash. A retrograde Saturn is the lord of this house. The same Saturn is conjunct Uranus.

William of Cambridge also has his Sun, Moon and Ascendant in the terms of Mars. However his Mars is weak in the sign of its detriment Libra. He does share a love of flying. His Mars is conjunct an exalted Saturn which tends to stabilize his actions and activities. His approach to life is in a more calculated and cautious manner.

Traditional astrologer Charles Obert defines the traditional 'terms' or 'bounds' as showing the competency of a planet to act. Terms show how things are done on their own terms as well as a setting of the planet's boundaries. The domicile ruler works through the term ruler. (*Using Dignities in Astrology*, p.61).

This astrological comparison I found fascinating. They have a common gene pool, as William of Gloucester is cousin to the Queen – William of Cambridge's grandmother – making the Williams third cousins to each other.

**Zsuzsi was not 'ideal material for a Royal bride'.  
The list against her was long**



The plane crashed shortly after takeoff and burst into flames. William and his co-pilot were killed instantly on August 28, 1972.

Plaque in commemoration of the plane crash. Photo from [www.johnhalley.uk](http://www.johnhalley.uk)

### *The Star Crossed Lovers*

Not wanting to follow the usual Royal pathway in life, William of Gloucester joined the Diplomatic Service and was appointed to the Foreign Office in Tokyo in 1968. It was here that he responded to an invitation from Zsuzsi Starkloff, a model, which in part read " Dear Prince Charming .....I am missing a slipper. Cinderella."

Well now, who could resist that! And so they fell in love and into the history books. But it was no fairy tale. Zsuzsi was not 'ideal material for a Royal bride'. The list against her was long: she was twice divorced, had two children, was seven years older than William (no problem to him with a Capricorn descendant he is drawn to older, mature women) and worse still, she was both Hungarian and Jewish.

For two years they enjoyed life in Tokyo. That is until Princess Margaret was dispatched on a visit to Tokyo to 'sort William out'. Memories of Edward and Mrs Simpson as well as Princess Margaret's own relationship with Peter Townsend was still fresh in the British public's memory. Nevertheless they continued together until William of

Gloucester was recalled to England due to his father's failing health. Zsuzsi followed him but shortly after left to live in New York. His parting gift to her was his signet ring engraved with the letter 'W' and a Crown.

For two years they kept in contact and according to Zsuzsi a letter from him in early August 1972 rekindled hopes of

**"Dear Prince Charming .... I am missing a slipper. Cinderella."**

marriage. As she was a trained pilot he invited her to join him as a co-pilot at an airshow in Wolverhampton. She declined due to a commitment in New York that weekend in late August. The plane crashed shortly after takeoff and burst into flames. William and his co-pilot were killed instantly on August 28, 1972. Zsuzsi was not invited to attend his funeral.

And there the story ended until, nearing her 80th birthday in 2015 Zsuzsi agreed



to speak to the press and to the making of her story regarding her association with 'The Other Prince William'.

Strange are the links and twists of fate. Twenty five years later William of Cambridge (then William Wales), who was named after William of Gloucester, lost his mother Princess Diana on August 31.

When comparing the death charts of William Gloucester and Diana they both had a planet at 8 deg of Virgo. In Williams's case it was Mars (fire), his burning plane crashed to the ground.

Diana had Mercury (vehicles) at 8 deg Virgo when her car hit the pillar in the Alma tunnel in Paris. The Sun on both dates was conjunct in early Virgo.

Diana's natal Mercury and William of Gloucester's Ascendant and William of Cambridge's Moon are all at 3-4 degrees of Cancer, linking them all through this degree. Even more chilling is the Sabian Symbol for the fifth degree of Cancer, where Diana's son William's Moon is placed. It reads 'at a railroad crossing, an automobile is wrecked by a train'.

Further research into the astrology charts

and the Royal Family revealed very sensitive and repetitious dates and zodiacal points. These specifically are 3-4 degrees of Cancer, and 24-30 of Sagittarius. Also, these points are in contra-antiscia to each other so hug the same axis. The calendar dates fall between 25-31 August when the Sun is at 2-8 degrees of Virgo.

The Duke of Windsor's constant rattling skeleton in the Royal cupboard is still present astrologically as his Sun (reputation) is at the ever recurring degree of early Cancer. Even his date of death on May 28 is astrologically square to the Sun's position in late August.

**Even more chilling is the Sabian Symbol for the fifth degree of Cancer, where Diana's son William's Moon is placed. It reads 'at a railroad crossing, an automobile is wrecked by a train'.**

Prince William of Gloucester with his parents, The Duke and Duchess of Gloucester and brother, Prince Richard, in 1962. Photo from [www.telegraph.co.uk](http://www.telegraph.co.uk)





Prince William of Gloucester and Zsuzsi in Tokyo 1968. Photo from [www.telegraph.co.uk](http://www.telegraph.co.uk)

## For two years they enjoyed life in Tokyo. That is until Princess Margaret was dispatched on a visit to Tokyo to ‘sort William out’.

The table lists these degrees, dates and persons. In particular the deaths of Princess Diana (Mother of William of Cambridge), Prince George, Duke of Kent, (brother of King George VI and Duke of Windsor) Earl Louis Mountbatten (Uncle to Prince Philip) and Prince William of Gloucester all died in the last days of August. They all had planets in late Sagittarius and/or early Cancer, falling within a close orb. Other royals share these degrees too, including the ill-fated Princess Anastasia of Russia, who was shot during the Russian Revolution and Princess Grace (Kelly) of Monaco who died in a car crash.

These are some of the highlights of the story of two Royal Williams. The energies of family charts are intertwined and expansive. This article is only the tip of the iceberg. It is good to note that William of Cambridge, second in line to the British throne, was able to marry for love.

Cindy Naunton's *The Forgotten Prince: William of Gloucester* was first published in the Federation of Australian Astrologers' *FAA Journal* in June, 2019.

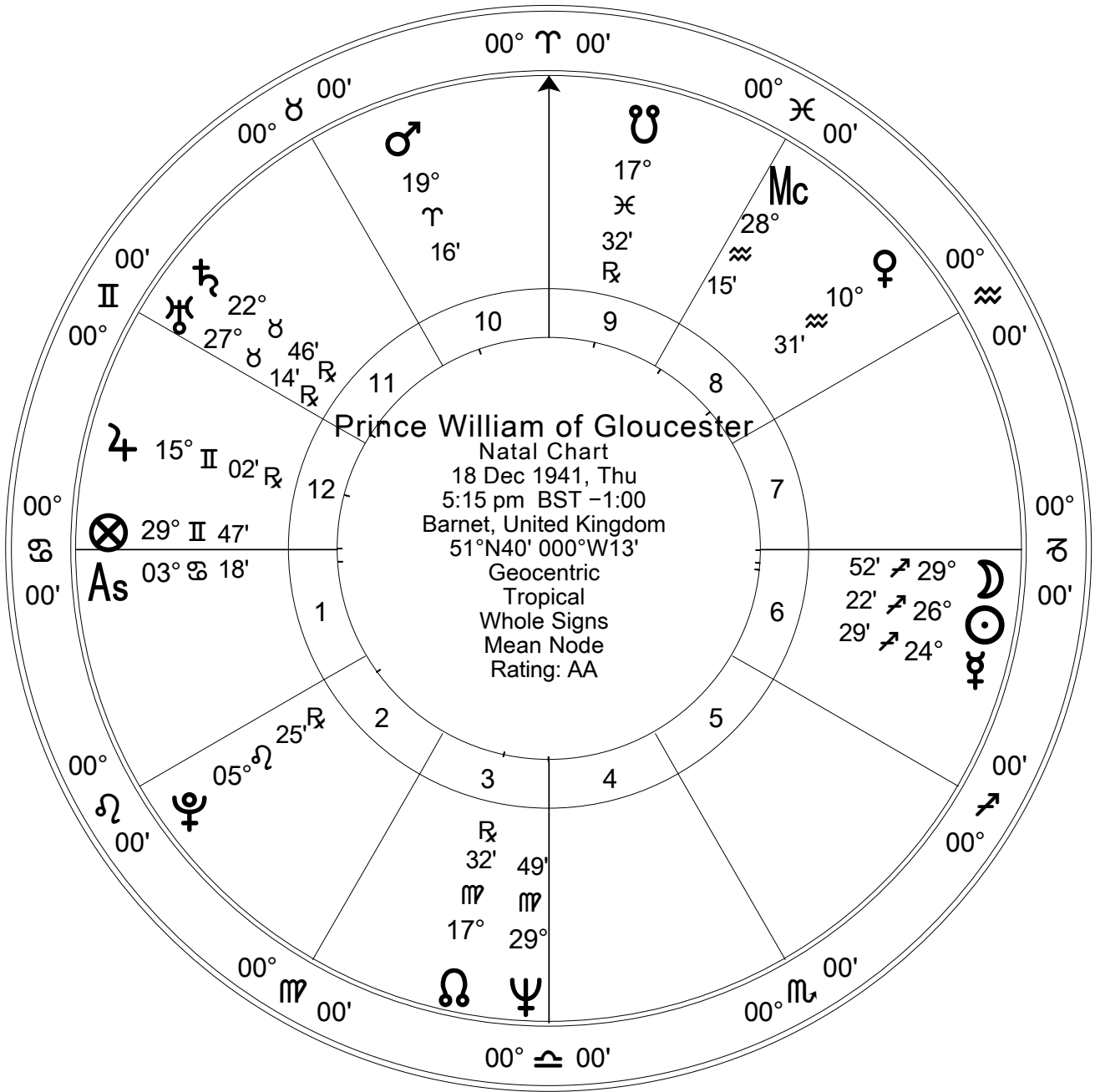
### Chart Data and Resource Material

Prince William of Gloucester, 18 Dec 1941, 5.15 pm, Barnet, England  
 Prince William of Cambridge, 21 Jun 1982 9.03 pm, London, England  
 Princess Diana, 1 Jul 1961, 7.45 pm Sandringham, England  
 George, Duke of Kent, 20 Dec 1902, 7.35 pm Sandringham, England  
 Duke of Windsor, 23 Jun 1894 9.55 pm  
 Lord Louis Mountbatten, 25 Jun 1900 6.00 am Windsor

### Resources:

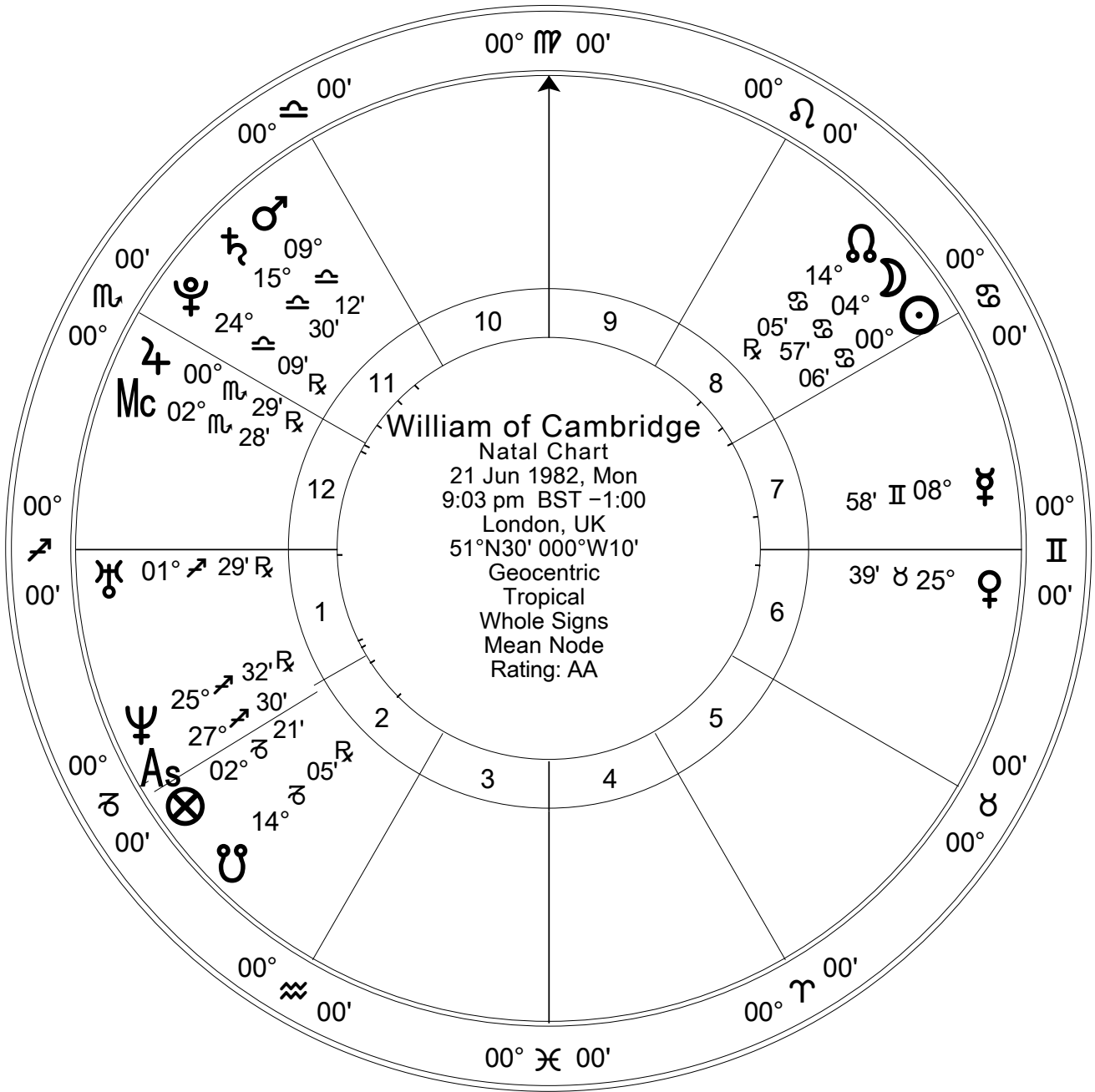
*The Other Prince William*, Documentary on SBS  
 Royal history & Wikipedia websites

**Prince William of Gloucester  
Natal Chart**



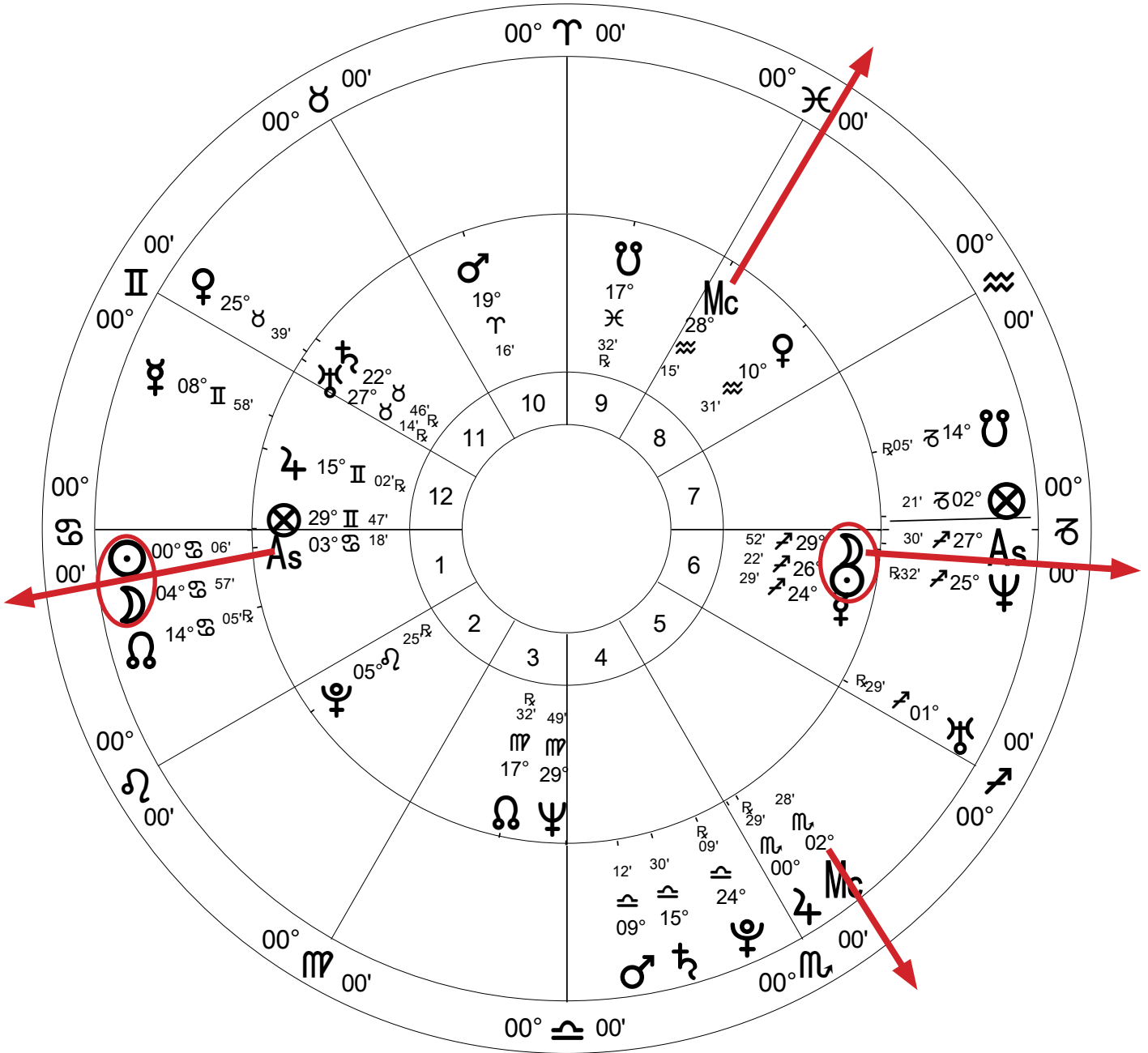


**William of Cambridge**  
**Natal Chart**



Inner Wheel  
**Prince William of Gloucester**  
 Natal Chart  
 18 Dec 1941, Thu  
 5:15 pm BST -1:00  
 Barnet, England  
 51°N40' 000°W13'  
 Geocentric  
 Tropical  
 Whole Signs  
 Mean Node

Outer Wheel  
**Prince William of Cambridge**  
 Natal Chart  
 21 Jun 1982, Mon  
 9:03 pm BST -1:00  
 London, UK  
 51°N30' 000°W10'  
 Geocentric  
 Tropical  
 Whole Signs  
 Mean Node



## Royal Table

Name	Gemini	Sagittarius	Cancer	Date of Death
Prince Charles	Uranus 29.55	Jupiter 29.53		
Princess Diana			Mercury 3.12	31 Aug 1997
Edward VIII (Duke of Windsor)			Sun 2.20	28 May 1972
George, Duke of Kent		Sun 28.00	Neptune 2.26	25 Aug 1942
Louis Mountbatten	Neptune 26.58	Ant Saturn 28.21	Sun 3.11	27 Aug 1979
William of Gloucester	P. Fortune 29.47	Sun 26.22 Moon 29.52	Asc 3.18	28 Aug 1972
William of Cambridge		Asc 27.30	Sun 0.06 Moon 4.57	

Table calculations - Cindy Naunton